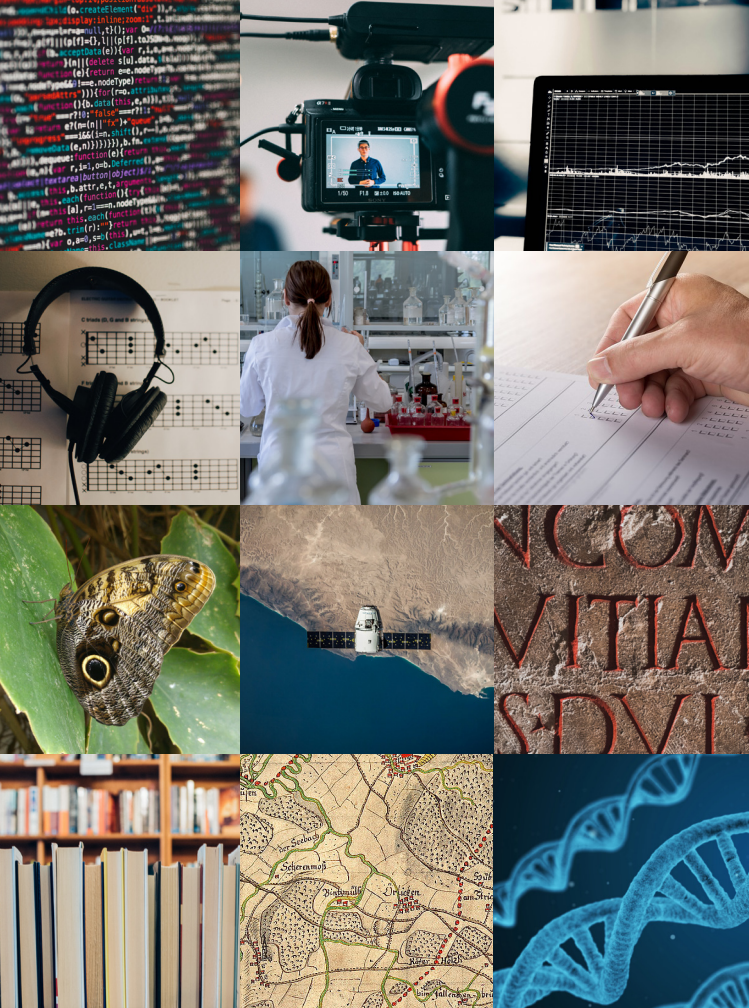
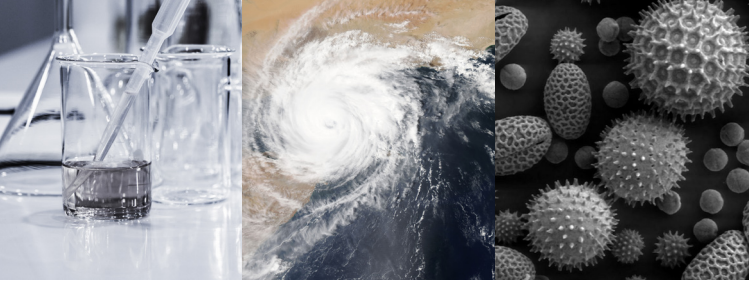


# Research Data Management (RDM)

## From planning to archiving



**Hochschule  
Bonn-Rhein-Sieg**  
University of Applied Sciences



## ► *RESEARCH DATA*

Research data might include measurement data, laboratory values, audiovisual information, texts, survey data, objects from collections, or samples that were created, developed or evaluated during scientific work (DFG Guidelines on the Handling of Research Data, 2015).

## ► *RESEARCH DATA MANAGEMENT (RDM)*

RDM is the systematic handling of research data throughout the entire **data life cycle**. It ranges from collection to analysis and further processing of data to archiving and, if applicable, publication.

## ► *FUNDING*

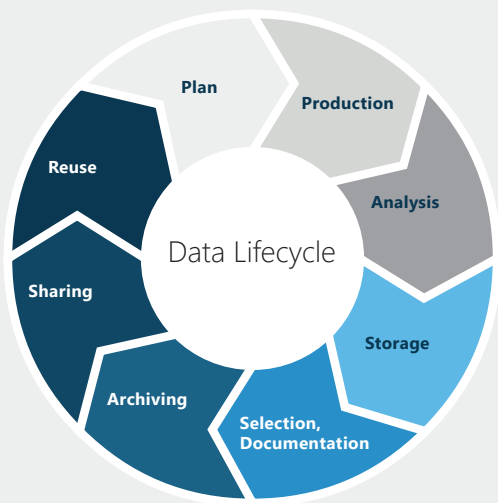
For the approval of **third-party funds**, proof of a structured data management during and after completion of the research process is increasingly important.

## ► *ADVANTAGES: RDM...*

- reduces the risk of data loss
- makes data available and reusable
- prevents overabundant data and redundancy
- promotes the implementation of ethical standards and principles of Good Scientific Practice
- creates legal certainty
- improves the data exchange within research groups (e.g., the data transfer between generations of doctoral students)

*"Quality-assured research data form a cornerstone of scientific knowledge and can [...] serve as a basis for further research. The sustainable safeguarding and provision of research data therefore does not serve only the examination of previous results, but to a large extent also the achievement of future results."*

From the preamble of the "Principles for the Handling of Research Data", Alliance of Science Organisations in Germany, 2010.



## IS YOUR RESEARCH DATA *FAIR*?



### **Findable**

Your research data can be found and cited.



### **Accessible**

Your research data is accessible.

... further information on  
[forschungsdaten.info](https://forschungsdaten.info)



### **Interoperable**

Your research data is technically reusable (formats, software).



### **Re-useable**

Your data is understandable and reusable.

# Contact and Services

## Support for your research

### TRAINING AND CONSULTING

- Research data bases
- Publishing (Open Access and Copyright)
- Impact Factor & Scientific Record
- Self-Archiving & Legal Aspects
- Predatory Publishers & Open Access
- Literature research
- Handling of research data

### TECHNICAL INFRASTRUCTURE

- Literature management with Citavi
- Atlassian Confluence
- BibCloud
- Online texteditor SciFlow
- Electronic Laboratory Notebook RSpace

*Contact*

#### **Research Services**

University and District Library  
Hochschule Bonn-Rhein-Sieg

[bibliothek.forschungsservice@h-brs.de](mailto:bibliothek.forschungsservice@h-brs.de)

<https://www.h-brs.de/en/bib/library-researchers>

